

The Dragon

Rob Grice

1 Full Score	4 Bb Trumpet 1
8 Flute	4 Bb Trumpet 2
2 Oboe	3 F Horn
1 Bassoon	6 Trombone
4 Bb Clarinet 1	2 Baritone B.C.
4 Bb Clarinet 2	2 Baritone T.C.
1 Bb Bass Clarinet	4 Tuba
2 Eb Alto Saxophone 1	1 Timpani
2 Eb Alto Saxophone 2	3 Percussion 1 - Snare Drum, Bass Drum
2 Bb Tenor Saxophone	5 Percussion 2 - Suspended Cymbal, Tenor Drum, Gong, Slapstick
1 Eb Baritone Saxophone	1 Bells

Extra Part - P3017761

3017762



WINGERT
JONES
PUBLICATIONS

Program Notes

This work for young musicians is as big, bold and majestic as the mythical and mighty creature it represents. Colorful and engaging stories of these legendary beasts have been written and told throughout history and continue to fascinate us more recently in television and movies. Portrayed sometimes as evil villains and sometimes as gallant heroes, the music serves as an impressive representation of these grand creatures, no matter what role they are cast in.

About the Composer

Rob Grice's music is performed around the world and appears on many state, national and international required music lists. His most recent commissions include the Association of Music in International Schools, Iowa Bandmasters, Concordia International School, American International school of Muscat, 20th Anniversary North Dakota Jr. High All-State (Phi Beta Mu Alpha Gamma Chapter) and Cityside & Creekside Middle Schools Zeeland, Michigan.

He has served as a conductor and clinician throughout the United States, as well as China, Canada, Singapore, and Oman. He is an active music educator, with experience teaching at the elementary, secondary and collegiate levels. He most recently taught at Dulwich College International, a British International School in Suzhou, China. His ability to write pedagogically effective music for educational music ensembles can be attributed to his vast experience as an educator. He receives many commissions for new concert works and creates new publications for concert band and string orchestra each year.

Achievement Series Lesson Guide

Every selection in the Wingert-Jones *Achievement Series* features concise learning objectives that support the **National Standards for Arts Education**.

THE DRAGON

Rob Grice

National Standards addressed through this publication:

- #2 Performing on instruments, alone and with others, a varied repertoire of music.
- #5 Reading and notating music.
- #6 Listening to and analyzing and describing music.
- #9 Understanding the music in relation to history and culture.

LEARNING OBJECTIVES

This selection provides an excellent opportunity for everyone to have fun, while working on dynamic contrast, and style. Make a clear distinction between the different dynamic markings. Mezzo piano (*mp*) must be softer than *mf*, and *mf* must be less loud than forte (*f*), etc.

A musical rule: accented notes are separated notes.

For good style, notes which are not accented should be lighter than those which are accented. Eighth notes should be lighter than quarter notes. Half notes are heavier than quarter notes, etc.

MUSIC THEORY

KEY: Concert c minor. Review the scale and arpeggio, which is printed at the top of each player's part.

Key of C minor

Concert C Minor
(C Aeolian)
Scale and Arpeggio



TIME SIGNATURE

$\frac{4}{4}$ - The upper number indicates that there are 4 beats to a measure. The lower number indicates that a quarter note receives one beat.

TEMPO MARKINGS

Moderato – moderately

DYNAMIC MARKINGS

mp (mezzo piano) – moderately soft

mf (mezzo forte) – moderately loud

f (forte) – loud

ff (fortissimo) – very loud

crescendo ($\text{—} \text{—} \text{—} \text{—} \text{—}$) – gradually get louder

diminuendo, or decrescendo ($\text{—} \text{—} \text{—} \text{—} \text{—}$) – gradually get softer

STYLE INDICATORS

accent (>) – emphasis on a note or chord. Accented notes are separated

staccato (.) – detached, separated, and light

OTHER TERMS

slur – an arched line drawn over a group of notes indicating that they are legato (connected)

tie – an arched line drawn over two notes of the same pitch indicating that they are connected

(work sheet is on the inside of the score's back cover)

The Dragon

Rob Grice
ASCAP

Moderato ♩ = ca. 120

-Ob.

Musical score for woodwinds and brass instruments. The score is in 4/4 time and B-flat major. The instruments listed are Flute/Oboe, Bb Clarinet 1/2, Alto Saxophone 1/2, Tenor Saxophone, Bb Trumpet 1/2, F Horn, Trombone/Baritone, and Tuba/Low Woodwinds. The Flute/Oboe part has a melodic line with accents and a dynamic marking of *mf*. The Bb Clarinet, Alto Saxophone, and Tenor Saxophone parts have sustained notes with a dynamic marking of *mf*. The Bb Trumpet, F Horn, Trombone/Baritone, and Tuba/Low Woodwinds parts are marked with a rest.

Moderato ♩ = ca. 120

G and C

Musical score for percussion and bells. The score is in 4/4 time and B-flat major. The instruments listed are Timpani, Percussion 1 (Snare Drum, Bass Drum), Percussion 2 (Suspended Cymbal, Tenor Drum, Gong, Slapstick), and Bells. The Timpani part has a melodic line with a dynamic marking of *mp*. The Percussion 1 part has a melodic line with a dynamic marking of *mp*. The Percussion 2 part has a melodic line with a dynamic marking of *mp* and a crescendo to *mf*. The Bells part has a melodic line with a dynamic marking of *mf*. The score is divided into four measures, numbered 2, 3, and 4.

The Dragon

9

+ Ob.

Fl./Ob. *ff*

Cl. 1/2 *ff*

A. Sx. 1/2 *ff*

T. Sx. *ff*

Tpt. 1/2 *ff*

F. Hn. *ff*

Trb./Bar. *ff*

Tuba/L.W.W. *ff*

Timp. *ff*

Perc. 1 *ff*

Perc. 2 *mp* Tenor Drum *ff* Gong

Bells *ff*

5 6 7 8 9

The Dragon

Fl./
Ob.

Cl. 1
2

A. Sx. 1
2

T. Sx.

Tpt. 1
2

F. Hn.

Trb./
Bar.

Tuba/
L.W.W.

Timp.

Perc. 1

Perc. 2

Bells

10 11 12 13 14

mf *ff*

mf *ff*

mf *ff*

The Dragon

17

Fl./Ob. *f*

Cl. 1/2 *f*

A. Sx. 1/2 *f*

T. Sx. *f*

Tpt. 1/2 *f*

F. Hn. *f*

Trb./Bar. *f*

Tuba/L.W.W. *f*

17

Timp. *f*

Perc. 1 *f*

Perc. 2 *f*

Bells *f*

15 16 17 18 19

The Dragon

Fl./
Ob.

Cl. 1
2

A. Sx. 1
2

T. Sx.

Tpt. 1
2

F Hn.

Trb./
Bar.

Tuba/
L.W.W.

Timp.

Perc. 1

Perc. 2

Bells

Slapstick

20 21 22 23 24

Detailed description: This is a page of a musical score for a piece titled "The Dragon". The score is arranged in a standard orchestral format with multiple staves. The instruments listed on the left are Flute/Oboe, Clarinet 1 & 2, Alto Saxophone 1 & 2, Tenor Saxophone, Trumpet 1 & 2, French Horn, Trombone/Euphonium, Tuba/Euphonium, Timpani, Percussion 1 & 2, and Bells. The music is written in a key signature of two flats (B-flat and E-flat) and a common time signature (C). The score spans measures 20 to 24. The percussion parts are particularly active, with Percussion 2 playing a continuous rhythmic pattern and Percussion 1 playing a more complex pattern. A "Slapstick" is used in measure 22. The woodwinds and strings play various melodic and harmonic lines, with some instruments having rests in certain measures.

The Dragon

25

Fl./Ob. *f*

Cl. 1
2

A. Sax. 1
2 *f*

T. Sax.

Tpt. 1
2 *f*

F. Hn.

Trb./Bar.

Tuba/
L.W.W.

25

Timp. *f*

Perc. 1 *f*

Perc. 2 *f*
Gong

Bells

25 26 27 28 29

The Dragon

33

Fl./Ob.
Cl. 1/2
A. Sx. 1/2
T. Sx.
Tpt. 1/2
F. Hn.
Trb./Bar.
Tuba/L.W.W.
Timp.
Perc. 1
Perc. 2
Bells

ff
ff
ff
ff
ff
ff
ff
ff
ff
ff

Slapstick

30 31 32 33 34

The Dragon

Fl./Ob.
Cl. 1
2
A. Sx. 1
2
T. Sx.
Tpt. 1
2
F Hn.
Trb./Bar.
Tuba/
L.W.W.
Timp.
Perc. 1
Perc. 2
Bells

mf *ff*
mf *ff*
mf *ff*

35 36 37 38 39

The Dragon

41

Fl./Ob.
Cl. 1
2
A. Sax. 1
2
T. Sax.
Tpt. 1
2
F. Hn.
Trb./Bar.
Tuba/
L.W.W.
Timp.
Perc. 1
Perc. 2
Bells

41

40

41

42

43

44

The Dragon

45

Fl./Ob.

Cl. 1/2

A. Sax. 1/2

T. Sax.

Tpt. 1/2

F. Hn.

Trb./Bar.

Tuba/L.W.W.

45

Timp.

Perc. 1

Perc. 2

Bells

Fl. div.

mf

mp

mf

mp

mp

mp

mp

mp

mp

mp

Sus. Cym.

mp ∇ *mf*

45

46

47

48

49

The Dragon

Fl./Ob.

Cl. 1
2

A. Sx. 1
2

T. Sx.

Tpt. 1
2

F. Hn.

Trb./Bar.

Tuba/
L.W.W.

Timp.

Perc. 1

Perc. 2

Bells

A.Sx. 1 only

B. Cl. Only

mf *f* *mf*

mf *f* *mf*

mf *f* *mf*

mp *mf*

50 51 52 53 54 55

mf *f* *mf*

The Dragon

60

Fl./Ob. *f* > *mf* *mf*

Cl. 1/2 *f* > *mf* *mf*

A. Sx. 1/2 *f* > *mf* *mf* a2

T. Sx. *f* > *mf* *f* *mf*

Tpt. 1/2 *f* *mf*

F. Hn. *mf*

Trb./Bar. *f* *mf*

Tuba/L.W.W. *f* *tutti* *mf*

Timp. *mf*

Perc. 1

Perc. 2

Bells *f* *mf*

56 57 58 59 60 61

The Dragon

Fl./Ob.
Cl. 1
2
A. Sax. 1
2
T. Sax.
Tpt. 1
2
F. Hn.
Trb./Bar.
Tuba/
L.W.W.
Timp.
Perc. 1
Perc. 2
Bells

62 63 64 65 66

mp *mf* *mf*

Wingert-Jones Publications

The Dragon

67

Fl./Ob. *f*

Cl. 1/2 *f*

A. Sx. 1/2 *f*

T. Sx. *f*

Tpt. 1/2 *f*

F. Hn. *f*

Trb./Bar. *f*

Tuba/L.W.W. *f*

Timp. *f*

Perc. 1 *f* *mf* *ff*

Perc. 2 *f* Gong *mf* *ff*

Bells *f*

67 68 69 70 71

The Dragon

75

Fl./Ob.
Cl. 1/2
A. Sx. 1/2
T. Sx.
Tpt. 1/2
F. Hn.
Trb./Bar.
Tuba/L.W.W.
Timp.
Perc. 1
Perc. 2
Bells

ff
ff
ff
ff
ff
ff
ff
mf *ff*
mf *ff*
ff

72 73 74 75 76

The Dragon

Fl./Ob.
Cl. 1/2
A. Sx. 1/2
T. Sx.
Tpt. 1/2
F Hn.
Trb./Bar.
Tuba/L.W.W.
Timp.
Perc. 1
Perc. 2
Bells

mf *ff*
mf *ff*
mf *ff*

77 78 79 80 81

The Dragon

Fl./Ob.
Cl. 1
2
A. Sx. 1
2
T. Sx.
Tpt. 1
2
F Hn.
Trb./Bar.
Tuba/
L.W.W.
Timp.
Perc. 1
Perc. 2
Bells

82 83 84 85 86 87

Name _____ Date _____

Instrument _____

The Dragon

Hit the right note! (2 points each)

Fill in the #s and b's in the concert scale below. You only have to complete the scale written in the clef for your instrument.

1. c natural minor Scale



or



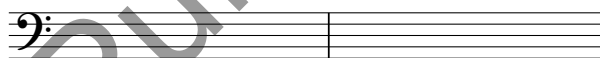
Transpose Scales for YOUR instrument! (2 points each)

Now it's time to write each concert scale as you play it on your instrument. Write the notes, including #s and b's, in the clef for your instrument. *Don't forget to transpose if you need to! Make sure you have the correct starting note!*

2. c minor Scale



or



Musical terms you should know! (1 point each)

Choose a term that best matches the definition.

3. $\frac{4}{4}$ indicates how many beats per measure?
a. 4
b. 8
c. 1
4. An Italian term meaning gradually get softer:
a. decrescendo
b. diminuendo
c. both a and b
5. This symbol $\rightarrow >$ is called what?
a. a staccato
b. an accent
c. a tie
6. Mezzo forte (*mf*) is an Italian term meaning ...
a. medium loud
b. medium soft
c. gradually get louder
7. A 4 in the bottom of a time signature indicates that a(n) ____ gets one beat.
a. quarter note
b. eighth note
c. half note
8. An arched line drawn over a group of different notes indicating that they should be played connected is called a:
a. dynamic marking
b. time signature
c. slur

Preview Only
Wingert-Jones Publications